

LA IMPORTANCIA DEL UNIFORME

BALLET LEOTARDS:

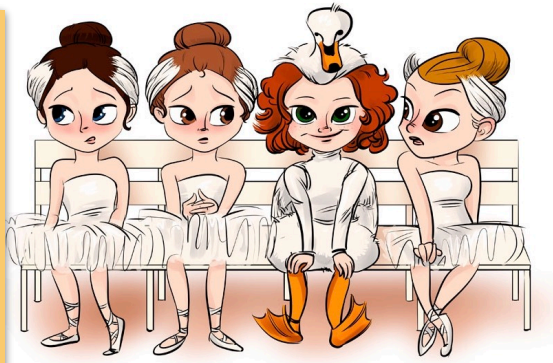
- Baby Ballet= Pink Leotard
- Pre Ballet = Light Blue
- Ballet begin=Turquoise
- Ballet inter = Burgundy
- Ballet advance= Black leotard

- Tights and shoes Pink for all female ballet.
- Ballet belt
- Ballet skirt (optional)
- Ballet bun for all level

BOYS:

- Black Leotard
- Black pant or tights
- Ballet Black Shoes

Thanks Top  
Art Dance Academy for all.



ART DANCE ACADEMY INFORMS THE ADAPTED UNIFORM FOR EACH CLASS IN ORDER TO GUARANTEE THE TEACHER'S WORK, DISCIPLINE, AND UNIFORMITY IN IT'S CLASSES.

Lyrical, Contemporary & Tap

Tanks top "Art Dance Academy"  
Black shorts or jazz pant Black leotard Black tights (optional)

Hair style:

Ponytail or ballet bun.  
Hip Hop: comfortable clothes **no jeans** and athletics shoes.



Tropical shoes



Ballet shoes



Tap shoes



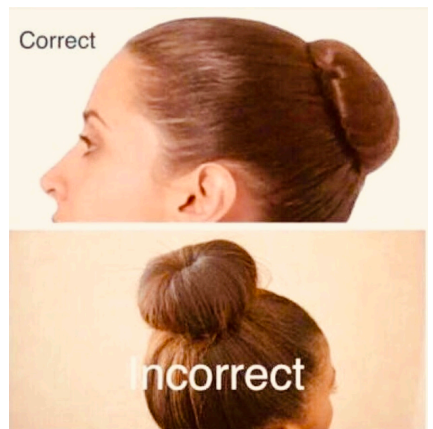
Contemporary Jazz shoes



Point shoes



Lyrical shoes



Correct

Incorrect